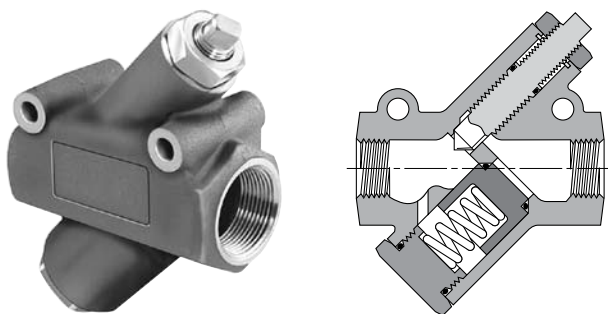
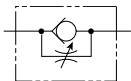


# “3250” Series – 1", 1-1/4" & 1-1/2" Ports



### Application

These extra large flow control valves have been developed to provide effective flow settings for large diameter cylinders and for other similar air applications. Each valve has a fine screw adjustment allowing precise settings which are secured by a sturdy lock nut.

### Operation

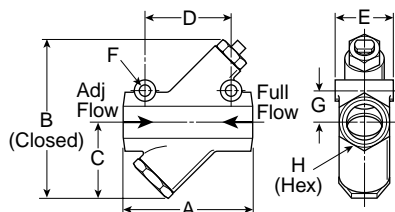
Large internal port passages coupled with unique soft seal poppet and inline design provide maximum full flow capacity and minimum pressure drop in the free flow direction. Their cone shaped brass metering valve will provide consistent cylinder speed by regulating cylinder exhaust.

### Valve Specifications

Operating Temperature –	
Standard	-40°F to 180°F
Extended Options	-40°F to 350°F
Operating Pressures	Maximum Air 250 PSIG

### Component Materials

Body	Cast Aluminum
Port Size	1", 1-1/4", 1-1/2"
Internal Components	Brass, Aluminum
Seals	Buna N, Urethane
Spring	Stainless Steel



### Model Selection Information and Dimensions

Model Number	03250 1000		03250 1250		03250 1500	
Port Size NPTF	1"		1-1/4"		1-1/2"	
	Inches	mm	Inches	mm	Inches	mm
A	5.00	127	5.00	127	5.88	149
B	6.50	165	6.50	165	8.00	203
C	3.00	76	3.00	76	3.75	95
D	3.25	83	3.25	83	3.50	89
E	2.25	57	2.25	57	2.50	64
F	.39	10	.39	10	.39	10
G	1.31	33	1.31	33	1.50	38
H	2.13	54	2.13	54	2.38	60

### Flow Capacity In Full Flow Direction

Port Size (NPTF)	Max. Flow (Needle Open)		Model Number
	SCFM**	C <sub>v</sub>	
1	1000	12.3	03250 1000
1-1/4	1200	13.8	03250 1250
1-1/2	1800	17.5	03250 1500

\*\* At 100 PSIG inlet pressure with full pressure drop.

F